



NATIONAL UNIVERSITY OF SCIENCE AND TECHNOLOGY
DEPARTMENT OF APPLIED CHEMISTRY
END OF SECOND SEMESTER EXAMINATIONS – MAY 2011
INORGANIC CHEMISTRY II – SCH 1201
TIME: (3) THREE HOURS

INSTRUCTIONS TO CANDIDATES

MATERIAL

Periodic Table

INSTRUCTIONS TO STUDENTS

Answer All questions in section A and All questions in Section B.

Answer each question on a **FRESH** page.

SECTION A Answer ALL questions. Each question carries 10 marks

- 1 .(a) In naming coordination compounds prefixes such as *fac-* and *mer-* are used. In what circumstances are these prefixes used? Use a simple general formula to illustrate your answer. [4 marks]
- (b) Draw the structure of the following complex:
Di- μ -chlorobis(diaquaplatinum(II)) Sulphate [2 marks]
- (c) Name the following geometry, and state the principal coordination number(s) that produce this geometric arrangement.



[4 marks]

- 2 .(a) What two properties are generally important in a solvent for electrochemical reactions. [2 marks]
- (b) Boric acid, $B(OH)_3$, acts as an acid in water, but does not do so via ionization of a proton. Rather, it serves as a Lewis acid towards OH^- . Explain with the use of a balanced equation [2 marks].
- (c) Briefly discuss Bronsted-Lowry definition and show how it is included as a special case in the solvent system definition [4 marks]

- (d) Distinguish between solvolysis and solubility. [2 marks]
3. (a) What is an icosahedron? For which element is it the most characteristic structural feature? [2 marks]
- (b) Germanium and Lead are elements in the same group (IVA). Both elements react with halides to form MX_2 molecule. Write the general formula of the other possible halide products. For a chosen halide, compare the stabilities of the MX_2 molecules of the two elements [4 marks]
- (c) Sulphur forms both discrete polyatomic molecules and extended structures.
 (i) Name the most thermodynamically stable polyatomic molecule of sulphur
 (ii) What is the general name for the S_n chains? [4 marks]
4. (a) Why are tetrahedral complexes usually not low spin? [2 marks]
- (b) What is a strong field ligand? Give one example [2 marks]
- (c) One advantage of the ligand field theory is that it can be extended to include π -bonding. Which kind of π -bonding increases the magnitude of the LFSE? Explain. [4 marks]
- (d) What is an acceptor π -ligand? Give two examples [2 marks]

SECTION B

Answer ALL questions from this section.

Question number five (5) must be answered on the tear-off sheet which must be detached from the question paper and attached to the answer book.

5. The diagram on the tear-off sheet shows the d-orbital splitting in various geometries of complex compounds.
- (a) In each section of the diagram from (a) to (f) identify and label the d-orbitals in their energy levels [8 marks]
- (b) In each section of the diagram from (a) to (f) state the geometry (or geometries) that coincides with the pattern of d-orbital splitting. [8 marks]
- (c) The symbols e , t , and a are symmetry labels defined in the group theory of orbitals. State what each symbol signifies. [4 marks]

6. (a) Substitution reactions of Octahedral complexes. There are four main mechanisms that have been established for these reactions. Name these four mechanisms and use the substitution of ligand X by ligand Y in the ML_5X complex to illustrate each. [8 marks]
- (b) Name the following complex compounds and ions:
(i) $[Co(NH_3)_5Cl]Cl_2$
(ii) $[Co(NH_3)(NO_2)Cl]Cl$
(iii) $[Co(NH_3)(ONO)Cl]Cl$
(iv) $(NH_4)_2[Ni(C_2O_4)_2(H_2O)_2]$ [6 marks]
- (c) There are two well established mechanisms for electron transfer reactions in complex compounds. Name these mechanisms and briefly discuss them. Use reaction equations to illustrate your answers. [6 marks]
7. (a) Name an important industrial process that employs a molten salt as a solvent [2 marks]
- (b) HBr, $HClO_4$, and HI are relatively strong Bronsted acids. For these acids to be distinguished according to acid strength they have to be studied in solvents such as sulphuric acid. What is a Bronsted acid? Write the Bronsted equilibrium for the solvent sulphuric acid indicating the strongest acid and strongest base that can exist in it. [6 marks]
- (c) How is the solvent *Aqua Regia* prepared? Which two molecules in mixture give the solvent a high oxidizing power? Give one example of the application of the solvent. [6 marks]
- (d) Separate the following solvents into protic and non-protic groups. For the protic group, write the possible Bronsted and Lowry pairs. NH_3 , HCl, BrF_3 , IF_5 , Cl_3PO , $AsCl_3$, CH_3CONH_2 . [6 marks]

END OF QUESTION PAPER!!!

P.T.O

Tear off this page and attach it to your answer sheet.

Candidate's Registration No:.....

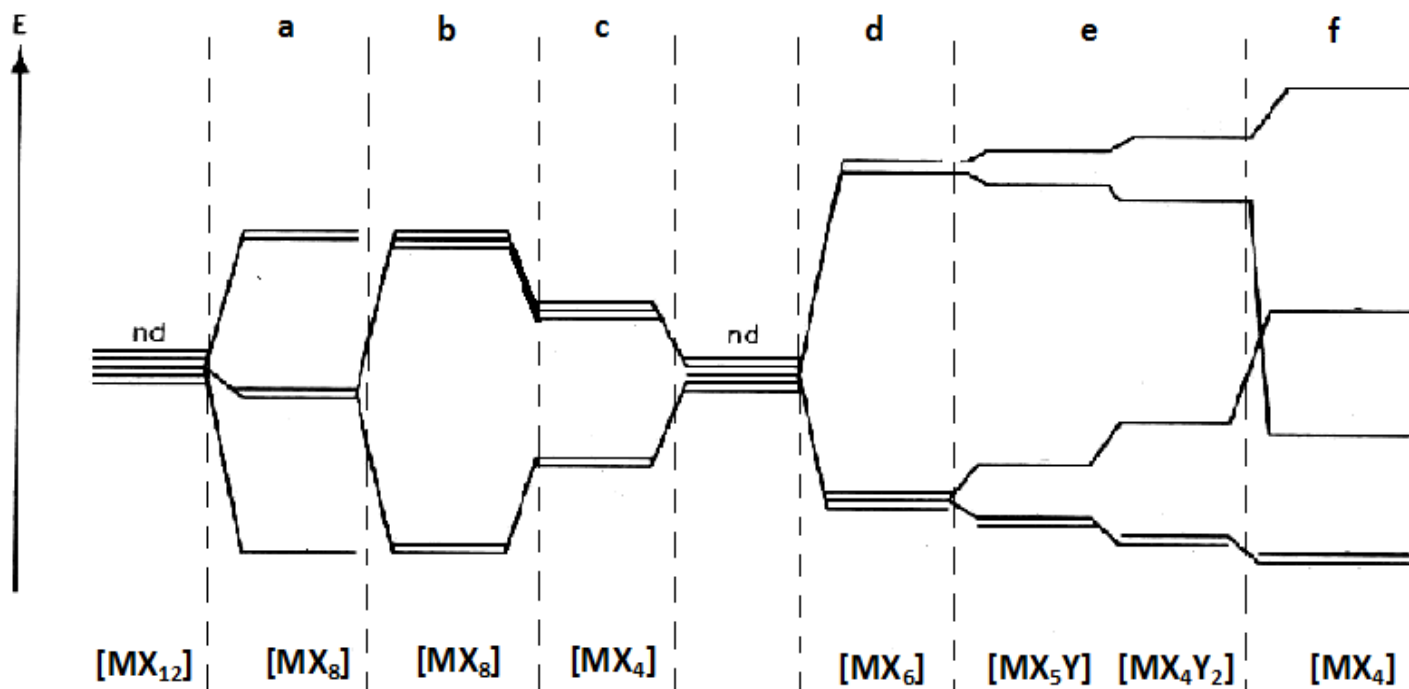


Fig: Splitting of d-orbital energy levels in ligand fields of different symmetries.

.....

.....

.....

.....

.....

.....

.....

.....

.....

.....

.....

.....

.....

.....

.....

.....

.....

.....

.....

.....

.....

.....

.....