

NATIONAL UNIVERSITY OF SCIENCE AND TECHNOLOGY

SSC1102

FACULTY OF APPLIED SCIENCES
BACHELOR OF SCIENCE HONOURS DEGREE EXAMINATIONS
DEPARTMENT OF SPORTS SCIENCE AND COACHING

THEORY: SSC1102 ANATOMY I

JUNE 2004

3 HOURS (100 MARKS)

INSTRUCTIONS

Answer question one and any other two questions. Where a question contains subdivisions, the mark value for each subdivision is given in square brackets. Illustrate your answer where appropriate with large clearly labeled diagrams.

- 1 a) Fig 1 and Fig 2 show the anterior and posterior views of some superficial skeletal muscles. Label the muscles indicated. [25 marks]
- b) Fig 3 is the human skeleton. Name the bones indicated. [10 marks]
- c) Fig 4 is a long bone. Identify the long bone and label the different regions indicated by lines. [5 marks]
- d) Fig 5 are arteries and Fig 6 are veins, name those indicated by line pointers. [10 marks]
- 2 a) Give a descriptive account of the layout of the human nervous system. [15 marks]
- b) Give a descriptive account of the respiratory structures in the human body. [10 marks]
- 3 a) What type of tissues are found in each of the three layers of the skin? [10 marks]
- b) Describe the general locations in the body and histological appearance of endocrine glands. [6 marks]
- c) Draw and label the structures of the heart. [9 marks]
- 4 a) With named examples describe the various kinds of diarthrotic joints in man. [13 marks]
- b) Write an essay on the muscles that have their insertions and origins in the scapula bone. [12 marks]
- 5 a) Describe the structural modifications of the small intestine that increase the surface area for absorption and its ability to propel food in one direction. [13 marks]
- b) Describe the structures and locations of the urinary system in a coronal section to the level of those involved in urine filtration. [12 marks]

END OF EXAM QUESTION PAPER

FIGURE 1

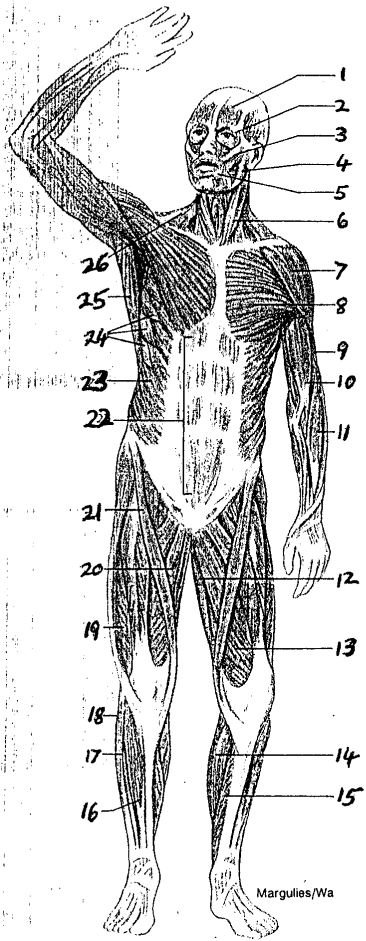


FIGURE 2

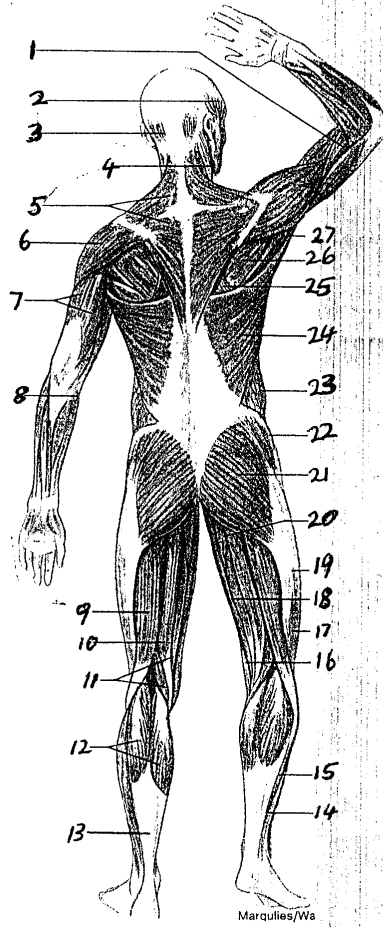


FIGURE 3

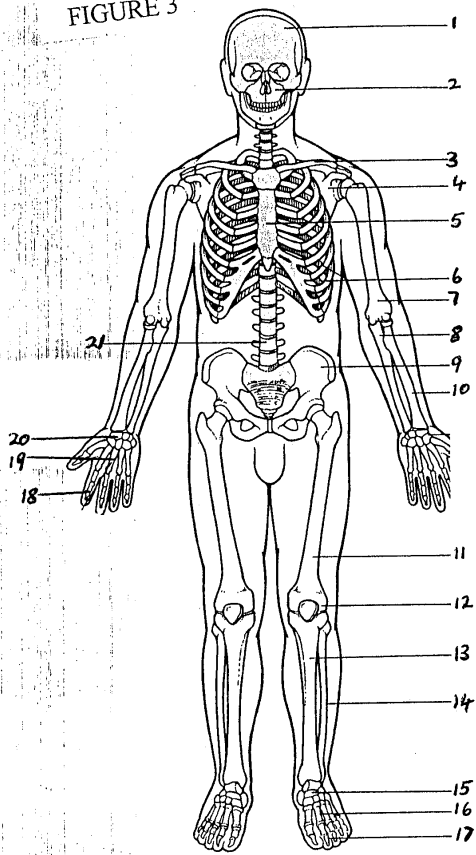


FIGURE 4

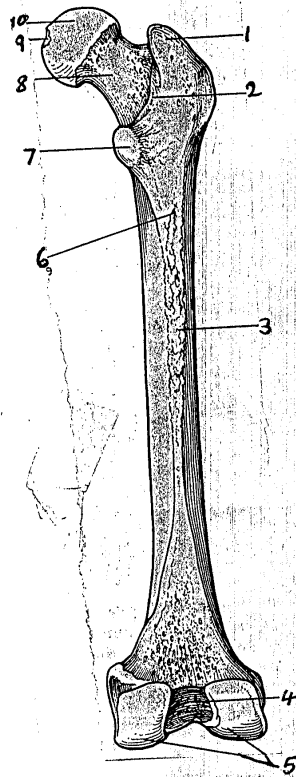


Figure 5 Arteries

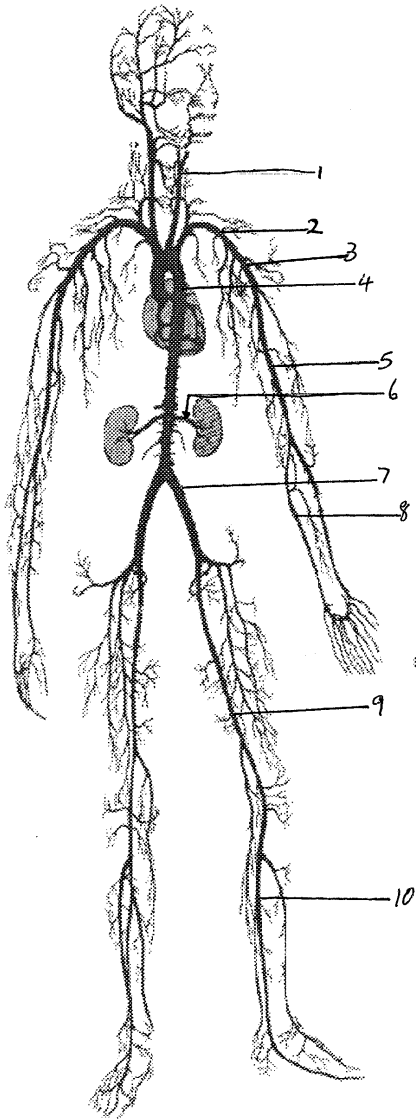


Figure 6 Veins

