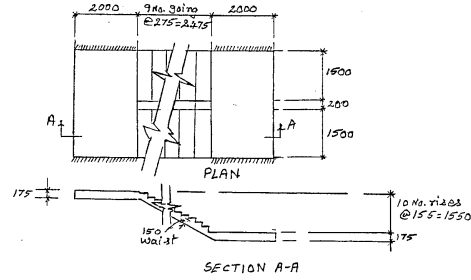


- a) The imposed load is 3 kN/m^2
- b) The finishes are – 13 mm plaster on underside of the flight and landings, 25 mm terrazzo tiles on 13 mm screed on the treads and the landings.
- c) $f_{cu} = 35 \text{ N/mm}^2$
- d) $f_y = 460 \text{ N/mm}^2$
- e) The conditions of exposure are mild.



[25]

QUESTION 3

A reinforced concrete column and pad foundation is required to satisfy B. S. 8110 and the following .

- a) Axial imposed load = 500kN
- b) Axial dead load = 1000kN
- c) The loads are transferred to the base through a centrally positioned column which is 400 mm square.
- d) The pad is square
- e) The safe ground bearing pressure = 150 kNm²
- f) $f_{cu} = 35 \text{ N/mm}^2$
- g) $f_y = 460 \text{ N/mm}^2$
- h) Column is short and braced.
- i) Supervision is normal.
- j) Mild exposure evolution
- k) Design the column and pad

[35]